

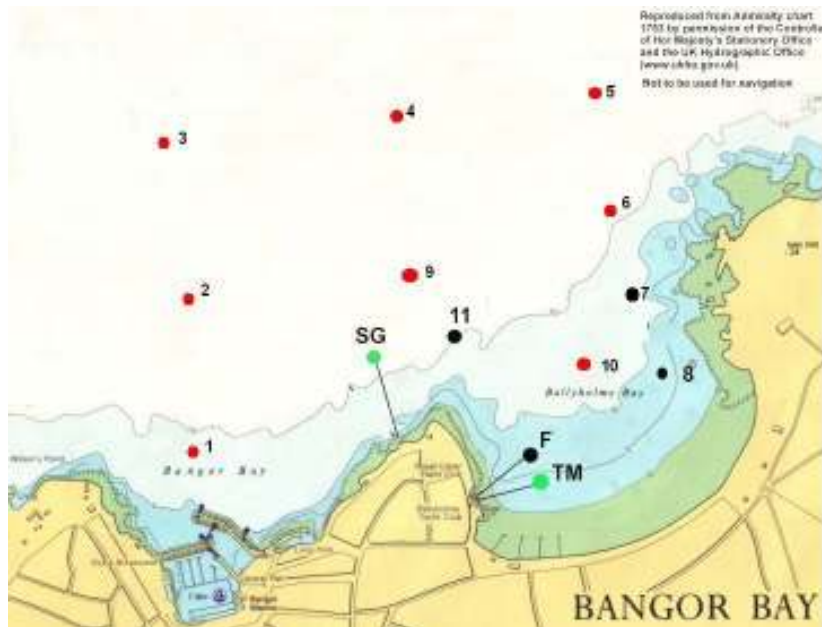
**Long Courses**

R indicates a Red number on a White background  
 W indicates a White number on a Black background

R 1	5 (P)	1 (S)	3 (S)	10 (S)	TM (S)	F (S)		
R 2	3 (P)	SG (S)	2 (S)	10 (S)	TM (S)	F (S)		
R 3	5 (P)	3 (P)	6 (S)	2 (P)	10 (S)	TM (S)	F (S)	
R 4	5 (P)	1 (S)	4 (P)	2 (P)	10 (S)	TM (S)	F (S)	
R 5	3 (P)	1 (P)	5 (S)	10 (S)	TM (S)	F (S)		
R 6	2 (P)	SG (P)	4 (S)	6 (S)	10 (S)	TM (S)	F (S)	
R 7	3 (S)	6 (S)	2 (P)	10 (S)	TM (S)	F (S)		
R 8	9 (P)	1 (P)	5 (P)	2 (S)	4 (S)	10 (S)	TM (S)	F (S)

W 1	5 (S)	10 (S)	TM (S)	F (S)				
W 2	3 (S)	10 (S)	TM (S)	F (S)				
W 3	6 (P)	3 (P)	10 (S)	TM (S)	F (S)			
W 4	5 (P)	1 (P)	10 (S)	TM (S)	F (S)			
W 5	4 (S)	10 (S)	TM (S)	F (S)				
W 6	2 (S)	10 (S)	TM (S)	F (S)				
W 7	SG (P)	1 (S)	5 (S)	10 (S)	TM (S)	F (S)		
W 8	6 (S)	10 (S)	TM (S)	F (S)				

(P) = Round mark to Port. (S) = Round mark to Starboard



# Ballyholme Yacht Club

**Commodore** Eric Mayne

**Vice Commodore** Alan Henry

**Rear Commodore (Sailing)** Jim Coffey

**Rear Commodore (Shore)** Mark Mackey

**Hon. Secretary** Jackie Patton

**Hon. Treasurer** Robin Gray

*Saturday 7<sup>th</sup> August 2010*

# REGATTA

# SAILING INSTRUCTIONS

11. Sailing Instructions (SIs) Nos. 1 to 10 are contained within the current Belfast Lough Yachting Conference Regatta Programme Handbook and are applicable to this Regatta **EXCEPT AS AMENDED BELOW.**

11.1 In amendment of SI 1.2 any changes to the SIs will be posted before 09:00 hrs. on the front door of the BYC Clubhouse and at the entrance to Bangor Marina.

**12. SIGNALS MADE ASHORE**

Signals made ashore will be displayed from the BYC Flagpole and the Bangor Marina Flagpole. When flag 'AP' is displayed ashore, "1 minute" is replaced with "not less than 30 minutes" in Race Signals.

**13. RACE AREA**

All starts will be from a Committee Boat which will be anchored off Ballyholme Bay.

**14. COURSES**

For all races the course will be from the Starting Line to a yellow windward mark which shall be rounded to Port if the Committee Boat is displaying a Red flag or to Starboard if a Green flag is displayed.

(a) **Races 1 and 2 only**

This will be followed by a number of more distant marks as displayed on the Committee Boat. Red numbers on a White background indicates that the mark shall be rounded to Port while White numbers on a Black background indicates that the mark shall be rounded to Starboard. The marks will be drawn from the following table:-

1	Cloghan Jetty buoy
2	Briggs buoy
3	CSC Mark A (Yellow sphere) - near N 54° 42'.425 W 005° 46'.621
4	RUYC/BYC No.1 Mark (Red sphere) - near N 54° 40'.2 W 005° 40'.3

(b) **ALL Races EXCEPT Races 9 – 11** (Races 1 to 8 + Race 12)

After rounding the yellow mark (and, in the case of **Races 1 and 2 only**, completing the course set in SI 14(a)) boats shall then return to Ballyholme Bay, leaving Red Mark 10, Green Mark TM and Black Mark F, all to starboard. Thereafter, boats shall sail one or more laps of the BYC Long Courses, as defined in the table on the back page and as indicated by the northerly board displayed on the front of the BYC Battery. Course diagrams are available on the BYC website (<http://www.ballyholme.com/index.php/courses/download-long-courses>).

(c) **Races 9 – 11 only**

After rounding the yellow mark boats shall then return to Ballyholme Bay, leaving Black Mark 8, Green Mark TM and Black Mark F, all to starboard. Thereafter, boats shall sail one or more laps of the BYC Short courses, as defined in the table shown and as indicated by the southerly board displayed on the front of the BYC Battery. Laminated course cards are available in the BYC foyer.

**15. START**

The start line will be between the main mast of the committee vessel at the starboard end and the port-end mark. In amendment to SI 5, except for the first start in each sequence, the warning signal for each class shall be the preparatory signal for the immediately preceding class.

**16. FINISH**

The finish will be an imaginary line drawn between the striped pole on the front of the BYC Battery to the Black Finishing Line Limit Mark F, located north of the Green Turning Mark TM.

**17. TIME LIMIT FOR RACES 3 - 14**

Boats failing to finish within 30 minutes after the leading boat in their class sails the course and finishes will be scored DNF. This amends RRS 35 and SI 9.

**18. PROTESTS AND REQUESTS FOR REDRESS**

Protests shall be lodged with the Race Officer within the protest time limit, which is 90 minutes after the last boat racing in the protesting boat's race finishes. This amends SI 8. Protest forms are available from the battery and office in BYC.

**19. DISCLAIMER OF LIABILITY**

Competitors participate in the regatta entirely at their own risk. See RRS 4, Decision to Race. The organising authority will not accept any liability for material damage, or personal injury or death sustained in conjunction with or prior to, during, or after the regatta.

**20. INSURANCE**

Each participating boat shall be insured against 3<sup>rd</sup> Party claims with a minimum cover of £2million per event or equivalent.

Low Water at Belfast: 09:11  
High Water at Belfast: 15:21

**Short Courses**

1.	11 (S)	8 (P)	7 (P)	TM (S)	F (S)		
2.	7 (P)	11 (P)	8 (P)	TM (S)	F (S)		
3.	11 (S)	7 (S)	TM (S)	F (S)			
4.	7 (S)	8 (S)	11 (P)	TM (S)	F (S)		
5.	11 (S)	8 (S)	TM (S)	F (S)			
6.	7 (S)	8 (S)	TM (S)	F (S)			
7.	7 (P)	11 (P)	7 (P)	11 (P)	8 (S)	TM (S)	F (S)
8.	11 (S)	7 (S)	11 (S)	7 (S)	TM (S)	F (S)	
9.	11 (S)	TM (S)	F (S)				
10.	7 (S)	TM (S)	F (S)				
11.	8 (S)	TM (S)	F (S)				

(P) = Round mark to Port. (S) = Round mark to Starboard